



**AUTOMOBILI  
LAMBORGHINI  
RACING SEAT**

The "Automobili Lamborghini" and "Automobili Lamborghini Bull and Shield" trademarks, copyrights, designs and models are used under license from Automobili Lamborghini S.p.A, Italy. Imported and distributed by MT Distribution



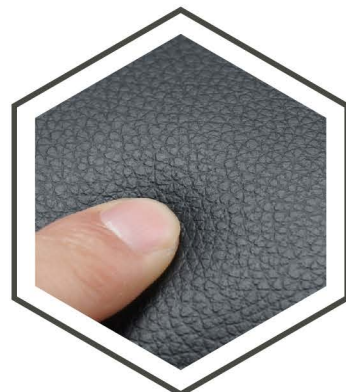
Imported and distributed by M.T. Distribution Srl  
Calderara di Reno, Bologna  
[www.mtdistribution.it](http://www.mtdistribution.it)

# AUTOMOBILI LAMBORGHINI RACING SEAT

Reclining  
back seat 135°



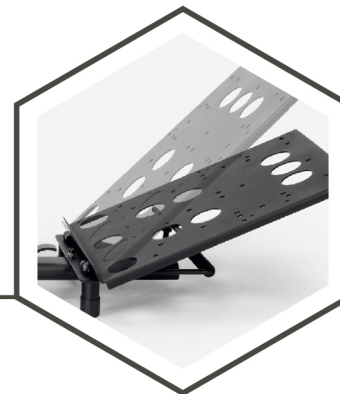
Soft material for  
maximum comfort



Adjustable height



Adjustable  
pedal angle



Adjustable  
wheel plate  
distance



Adjustable  
pedal distance



- Compatible with standard and ForceFeedback steering wheels attached by clamps, suction cups, or bolts (Logitech, Thrustmaster, Fanatec, Panthek, ...)
- Reclining mechanism to simulate different style driving positions
- Automobili Lamborghini logo embroidered on the seat
- Suitable for people 1.4 m to 2.1 m tall
- Structure made of carbon steel
- Wheel plate bar with triangle shape and screw lock to guarantee sturdiness and stability
- Protective pads under the base to avoid slipping and scratching the floor
- Already made holes on the plate to bolt firmly ForceFeedback wheels
- Easy to assemble, detailed instruction manual included
- Adjustable angle pedals plate from 0° to 28°
- Adjustable pedal plate distance
- Adjustable wheel plate height
- Adjustable seat distance

