



## Switch Gigabit Ethernet 26-porte, 2 x SFP

### Easily boost your networking throughput

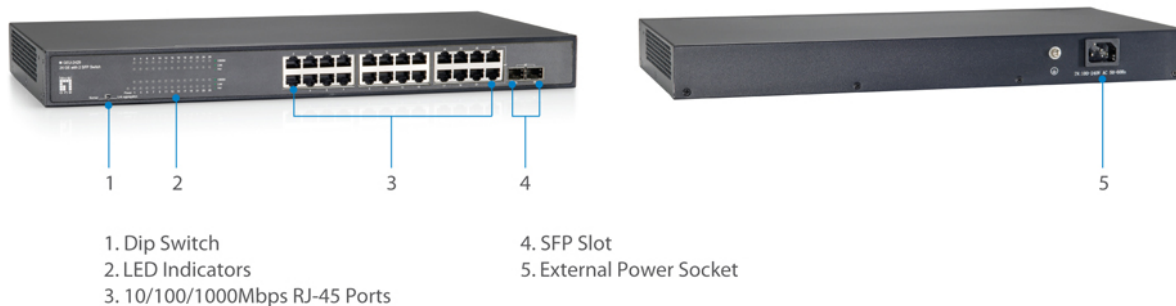
The GEU-2429 24 Gigabit ports that lead you to a real Gigabit connection. Users are now able to transfer large and high bandwidth-needed files faster and hence get a real efficiency improvement. In addition to the cooper ports, 2 of those ports support fiber connection with the equipped SFP ports for obtaining long-distance communication.

### Offers users with fast and reliable network

The store-and-forward architecture filters errors and forwards packets in a non-blocking environment. Flow control ensures the correctness of data transmitting. The 802.3x and backpressure flow control mechanisms work respectively for full and half duplex modes.

### Easy installation and maintenance

It supports Nway auto-negotiation protocol that detects the networking speed (10/100/1000 Mbps) and the duplex modes (Full/Half ) automatically. Auto-MDI/MDI-X function alleviates the effort to use crossover cables. Also, rich diagnostic LEDs are provided for users to get real-time information of the connection status.



## Key Features

- 24 porte Gigabit Ethernet con 2 alloggi SFP Gigabit
- 
- Jumbo Frame 9K per aumentare la velocità di trasferimento dei dati
- Velocità di trasmissione e ricezione di 10/100/1000Mbps
- Supporta 8.000 indirizzi MAC auto-learning e auto-aging
- Il controllo del flusso IEEE 802.3x protegge dalla perdita di pacchetti per la trasmissione affidabile dei dati
- Minimizza l'impronta di carbonio con tecnologie avanzate ad alta efficienza energetica (IEEE 802.3az)
- Static trunk function for port aggregation



## Works With



### **GVT-0300**

1.25Gbps Multi-mode SFP Transceiver, 550m, 850nm



### **GVT-0301**

1.25Gbps Single-mode SFP Transceiver, 10km, 1310nm



### **GVT-0302**

1.25Gbps Single-mode SFP Transceiver, 80km, 1550nm

---

## Specifications

### System Specifications

#### Standards & Protocols:

IEEE802.3(10BASE-T),  
IEEE802.3u(100BASE-T),  
IEEE802.3ab(1000BASE-T),  
IEEE802.3az Energy Efficient Ethernet

#### Memory:

16Mbit

#### Buffer Memory:

4.1Mbit

#### Connectors and Cabling:

24 x RJ45 10/100/1000Mbps  
2 x 1000BASE-X SFP slots

#### Indicator:

Power, LINK/ACT,1000M

#### Transmission Method:

Store- forward

#### Power Input:

12V/2A

### Features

#### General:

Static trunk function for port aggregation (trunk port: 23-26 )

### Performance

#### Backplane (Gbps):

52Gbps

#### MAC Address Table:

8K

Data Transfer Rate:

1488000pps

Jumbo Frame (K):

9KB

## Environment

Power Saving:

YES

Temperature (°C):

0-40°C

Humidity (Non-condensing):

10%~90%

## Physical Specifications

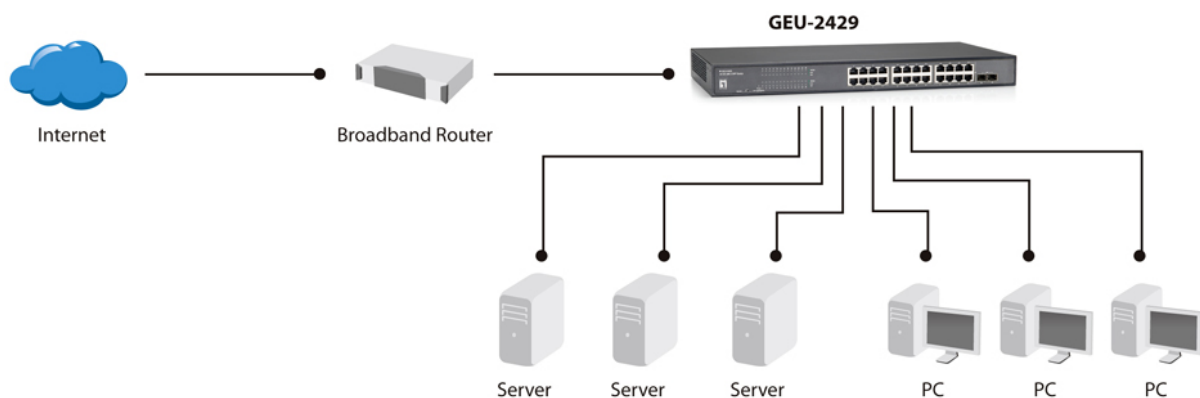
Dimensions (W x D x H mm):

440x220x44mm

Weight (g):

2kg

## Diagramma



## Order Information

GEU-2429

## Package Contents

GEU-2429

Cavo di Alimentazione

Kit Montaggio Rack 19"

Manuale d'installazione rapida

No liability or responsibility for any errors or omissions in the content.  
Specifications are subject to change without notice.  
All mentioned brand names are registered trademarks and property of their owners.  
Copyright © Digital Data Communications GmbH, Germany. All Rights Reserved.